

**Voices of Hope**  
**Easter Sunday 5**

G<sup>maj7</sup> B<sup>m7</sup> A<sup>sus4</sup> G<sup>maj7</sup> B<sup>m7</sup> A<sup>sus4</sup>

D G D B<sup>m7</sup> A D A<sup>sus4</sup>

In the house that Love is build-ing there is room\_ e - nough for all, end - less  
 In the gar - den Love is ted - ing there's a great and bound-less feast, where the  
 Oh, the song that Love is rais - ing is of pure, un - end - ing light in the

9 D G D B<sup>m7</sup> A D

wel - come in her raf - ters, mer - cy sing - ing through her walls. Here is  
 seeds of hope are plant - ed and the yield is heav - en's peace. As the  
 voic - es of her peo - ple, ris - ing to e - ter - nal skies. Now the

13 A B<sup>m</sup> D D<sup>7/F#</sup> G

ref - uge for all peo - ple from ev - ery tribe and tongue. in the  
 field be - comes a har - vest for the man - y hun - gry ones, in the  
 dark - ness shall be swal - lowed by the Liv - ing Word of God. Oh, the

17 E<sup>m7</sup> D/F# G A D<sup>1,2</sup>

house that Love is build - ing there is room for ev - ery - one.  
 gar - den Love is tend - ing there's e - nough for - ev - ery - one.  
 song that Love is rais - ing is a song for - ev - ery —

21 D<sup>Final</sup> E<sup>m7</sup> D/F# G A D

one. in the house that Love is build - ing there is room for ev - ery - one.

# GLORY TO GOD

INTRO (♩ = ca. 104)

D A/C# Bm F#m/A G Em7 Asus4 A

♩ REFRAIN: 1st time: Cantor/Choir, All repeat; thereafter: All

D A/C# Bm F#m/A G D/F# Em A

Glo-ry to God. Glo-ry to God. Glo-ry to God in the high - est.

D A/C# Bm F#m/A G D/F# Asus4 A

and on earth, peace on earth, peace to peo-ple of good will. (Men) 1. We (All) 2. (Women) 3. For

1-4	(1st: D.S.) to Verses
Dsus4	D

VERSE 1: Cantor/Choir

(Men) Em A (Women) D D/F# (Men) Em/G A (Women) D

(1. We) praise you, we bless you, we a - dore you, we glo - ri - fy

D/F# (Men) G A A/G D/F# Bm7

1. you, we give you thanks for your great glo - ry,

Em F# Bm Bm/A G Em Asus4 A

1. Lord God, heav'n - ly King, O God, al - might - y Fa - ther.

D.S.

Please Turn Next Page Refrain & Verse 2 ----->>>

**REFRAIN:** 1st time: Cantor/Choir, All repeat; thereafter: All

D A/C# Bm F#m/A G D/F# Em A

Glo-ry to God. Glo-ry to God. Glo-ry to God in the high - est,

D A/C# Bm F#m/A G D/F# Asus4 A

and on earth, peace on earth, peace to peo-ple of good will. (Men) 1. We  
(All) 2.  $\dot{\bar{z}}$   
(Women) 3. For

1-4	(1st: D.S.) to Verses
Dsus4	D

**VERSE 2:** A bit slower ( $\text{♩} = \text{ca. } 96$ ) Cantor/Choir

Em Asus4 A D D/F# Em/G Asus4 A D D/F#

2. Lord Je - sus Christ, On - ly Be - got - ten Son,

Em Asus4 A D/F# Bm G D/F# G A G Asus4 A

2. Lord God, Lamb of God, Son of the Fa - ther, you take a-way the

D/F# Bm Em D/F# Em/G A G Asus4 A D/F#

2. sins of the world, have mer - cy on us; you take a-way the sins of the

Bm Em D/F# G Asus4 A G A D/F#

2. world, re - ceive our — prayer; — you are seat - ed at the right hand, —

Bm Em F# Bm Bm/A G Em Asus4 A

2. — the right hand of the Fa - ther, have mer - cy on us.

*D.S.*

Please Turn Next Page Refrain & Verse 3 ----->>>

**REFRAIN: 1st time: Cantor/Choir, All repeat; thereafter: All**

D A/C# Bm F#m/A G D/F# Em A

Glo-ry to God. Glo-ry to God. Glo-ry to God in the high - est,

D A/C# Bm F#m/A G D/F# Asus4 A

and on earth, peace on earth, peace to peo-ple of good will. (Men) 1. We  
(All) 2. (Women) 3. For

1-4	(1st: D.S.) to Verses
Dsus4	D

**VERSE 3: Cantor/Choir**

Em A D D/F# Em/G A

(Women) (Men)

(3. For) you a-lone are the Ho-ly One, you a-lone are the

D D/F# G A D/F# Bm7 Em D/F# Em/G A

(Women)

3. Lord, you a-lone are the Most High, Je-sus Christ,

D F#7 Bm Bm/A G D/F# Em A

(All)

3. with the Ho-ly Spir-it, in the glo-ry of God the Fa-ther.

*D.S. al fine*

**REFRAIN: 1st time: Cantor/Choir, All repeat; thereafter: All**

D A/C# Bm F#m/A G D/F# Em A

Glo-ry to God. Glo-ry to God. Glo-ry to God in the high - est,

D A/C# Bm F#m/A G D/F# Asus4 A

and on earth, peace on earth, peace to peo-ple of good will. (Men) 1. We  
(All) 2. (Women) 3. For

1-4	(1st: D.S.) to Verses
Dsus4	D

Final Dsus4 D Em D/F# Em Asus4 A Dsus4 D

will. A - men. A - men.

*Fine*

# PSALM 33: LORD, LET YOUR MERCY

REFRAIN: (♩ = ca. 84) 1st time: Cantor, All repeat; thereafter: All

Capo 3: (C) (C/B) (Am) (Am/G) (F) (G) (Dm7) (F)  
 Eb Eb/D Cm Cm/Bb Ab Bb Fm7 Ab

Melody  
 Harmony

Lord, let your mer-cy be on us \_\_\_\_\_ as we place our trust in

1 (G) Bb rit. D.C. 2-4 (G) Bb rit. to Verses Final (G) Bb rit. (C) Eb Fine

you. \_\_\_\_\_ you. \_\_\_\_\_ you. \_\_\_\_\_

VERSES: Cantor (C) (Am) (Dm) (G) (F)  
 Eb Cm Fm Bb Ab

*mp a tempo*

1. Ex - ult, you just, in the Lord. \_\_\_\_\_ It is good to  
 2. The word of God ev - er true, \_\_\_\_\_ all the works of  
 3. Be - hold, the eyes of the Lord \_\_\_\_\_ look with love on

(G) (Csus4) (C) (Em) (Am) (F) (G)  
 Bb Eb sus4 Eb Gm Cm Ab Bb

1. sound your prais - es, \_\_\_\_\_ giv - ing thanks to God with your strings and  
 2. God en - dur - ing. \_\_\_\_\_ Ev - 'ry moun - tain peak, ev - 'ry o - cean  
 3. those who hun - ger, \_\_\_\_\_ bring - ing health and hope to our days of

(Em) (Am) (F) (G)  
 Gm Cm Ab Bb rit. D.C.

1. voice, \_\_\_\_\_ mak - ing mu - sic ♪ be - fore the Lord. \_\_\_\_\_  
 2. floor, \_\_\_\_\_ lov - ing la - bor, \_\_\_\_\_ ♪ lov - ing Lord. \_\_\_\_\_  
 3. want, \_\_\_\_\_ bring - ing mer - cy ♪ in ev - 'ry need. \_\_\_\_\_

Text: Based on Psalm 33:22, 1-2, 4, 6-7, 18-19. Refrain © 1969, 1981, ICEL. All rights reserved. Used with permission. Verses, Bob Dufford, b. 1943, © 1993, 1994, Robert J. Dufford, SJ. Published by OCP. All rights reserved.  
 Music: Bob Dufford, © 1993, 1994, Robert J. Dufford, SJ. Published by OCP. All rights reserved.

Refrain

Al - le - lu - ial — Al - le - lu - ial Al - le - lu - ial —

I am the way, the truth and the life, says the Lord;  
no one comes to the Father, except through me.

# OH, Who Can Know The Mind of God

t=64

A

D

A/C#



Oh, who can know the mind of God, Or who dare  
 Who else has cupped the seas in hands, Or set the  
 Who else sur-rounds in bound-less deeps The is-land  
 Too high for us, O Lord, your ways, Too vast your

D

A<sub>sus4</sub>

A

F#m

A<sub>sus4</sub>/E



call his name. — whose glo - ry is the ris - ing  
 skies a - light? — Who else could carve from stone the  
 of the mind? — Who else in clouds of si - lence  
 works: to them — We reach with trem - bling words of

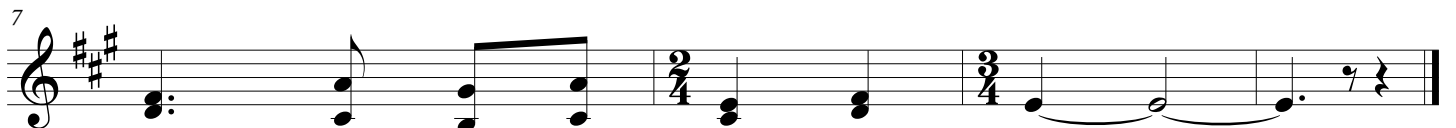
D

A/E

D

A<sub>sus4</sub>

A



sun, Whose ev - ery word is flame? \_\_\_\_\_  
 land, Or sum - mon day from night? \_\_\_\_\_  
 keeps Long watch for all our kind? \_\_\_\_\_  
 praise To touch your gar - ment's hem \_\_\_\_\_

# HOLY

INTRO (♩ = ca. 84)

Em D/F# G Asus4 A D A/C# Bm F#m/A

Ho - ly, Ho - ly,

G D/F# Em Asus4 A D A/C#

Ho - ly Lord God of hosts. Heav - en and earth are

Bm Bm/A G D/F# G Asus4 A

full, are full of your glo - ry. Ho -

Bm A D/F# G A/G D/F# Em D/F# G A Dsus4 D D (Fine)

san - na! Ho - san - na! Ho - san - na in the high - est. Bless - ed is

A/C# Bm Bm/A G D/F# G Asus4 A

he who comes, who comes in the name of the Lord. Ho -

# WE PROCLAIM YOUR DEATH

(♩ = ca. 84)

Dsus2 Priest Asus4 A All D A/C# Bm

The mys - t'ry of faith. We pro - claim your Death, O Lord,

Bm/A G Asus4 A F#m7 Bm Em D/F# G A Dsus4 D

and pro - fess your Res - ur - rec - tion un - til you come a - gain.

# DOXOLOGY AND AMEN

(♩ = ca. 84)

D A/C# Bm D/F# Em D/F# G A Dsus4 D

A - men. A - men. A - men.

## Lamb Of God (Mass of Christ the Savior)

Dan Schutte

D A/C# Bm Bm/A G Em7 Asus4 A

5 D A/C# Bm Bm/A G A A/G F#m7

Lamb of God, you take a - way the sins of the

9 Bm<sub>1,2</sub> Bm/A Em D/F# Em/G A

world, have mer - cy on us.

12 Bm<sub>3</sub> Bm/A Em D/F# G Asus4 A D Dsus4 D

world grant us peace.

# UNLESS A GRAIN OF WHEAT

**REFRAIN** (♩. = ca. 52)

D Dmaj7 Bm Bm7 G  
 Un - less a grain of wheat shall fall up - on the ground -  
 A sus2 A7 F#m Bm [Bm] Gmaj7 A7 F#m  
 and die, it re - mains but a sin - gle grain -  
 Bm Em7 A Em7 1-6 to Verses Final  
 with no life. A D Fine  
 2. If

**VERSES**

F G A F  
 1. If we have died with him, then we shall live with him;  
 2. an - y one serves me, then they must fol - low me;  
 3. † Make your home in me as I make mine in you;  
 4. If you re - main in me and my word lives in you,  
 5. † Those who love me are loved by my Fa - ther;  
 6. † Peace I leave with you, my peace I give to you;  
 G F Em7/A A Em7/A A7 D.C.  
 1. if we hold firm, we shall reign with him.  
 2. wher - ev - er I am, my ser - vants will be.  
 3. those who re - main in me bear much fruit.  
 4. then you will be my dis - ci - ples.  
 5. we shall be with them and dwell in them.  
 6. peace which the world can - not give is my gift.

Text: Based on John 12:24; Bernadette Farrell, b. 1957.  
 Music: Bernadette Farrell.  
 Text and music © 1983, Bernadette Farrell. Published by OCP Publications. All rights reserved.

## SING OF MARY

472

F Bb F Bbmaj7 C F Bb F/C C F

1. Sing of Ma - ry, pure and low - ly, Vir - gin Moth - er un - de - filed.  
 2. Sing of Je - sus, son of Ma - ry, In the home at Naz - a - reth.  
 3. Glo - ry be to God the Fa - ther; Glo - ry be to God the Son;

Bb F Bbmaj7 C F Bb F/C C F

1. Sing of God's own Son most ho - ly, Who be - came her lit - tle child.  
 2. Toil and la - bor can - not wea - ry Love en - dur - ing un - to death.  
 3. Glo - ry be to God the Spir - it; Glo - ry to the Three in One.

Bb F C F Bb F C

1. Fair - est child of fair - est moth - er, God the Lord who came to earth,  
 2. Con - stant was the love he gave her, Though he went forth from her side,  
 3. From the heart of bless - ed Ma - ry, From all saints the song as - cends,

F Bb F Bbmaj7 C F Bb F/C C F

1. Word made flesh, our ver - y broth - er, Takes our na - ture by his birth.  
 2. Forth to preach and heal and suf - fer, Till on Cal - va - ry he died.  
 3. And the Church the strain re - ech - oes Un - to earth's re - mot - est ends.

Note: When guitar and keyboard play together, keyboardists should improvise using the guitar chords above the melody.

Text: 87 87 D; Roland F. Palmer, SSJE, 1891–1985, © Estate of Roland F. Palmer. All rights reserved. Used with permission.

Music: PLEADING SAVIOR; *Christian Lyre*, 1830; keyboard acc. by Ralph Vaughan Williams, 1872–1958, in *English Hymnal*, 1906.